


# FISHWAY STATUS REPORT

Date: 10/24/2015  
 Inspection Period: 10/18/2015 thru 10/24/2015

All JD Fishways are inspected twice per day during fish season, Mar. 1 - Nov. 30  
 Frequent monitoring of the PLC displays in SMF Fisheries Office as necessary.



**US Army Corps  
of Engineers**  
Portland District

**JOHN DAY DAM**

JD/WC Project-Fisheries  
 P.O. Box 823  
 Rufus, Oregon 97050  
 Phone: 541-506-7860

John Day Dam	Inspections	Criteria	Total Number of Inspections:	14	Temperature:	63 F
	Out of Criteria	Limit				
<b>NORTH FISHWAY</b>			4 out of 6 AWS pumps available since 12/23/14			
Exit differential	0	≤ 0.5'				
Exit Control weirs	0	High setting	High setting is normal for JDN			
Count station differential	0	≤ 0.3'				
Weir crest depth (DS gauge)	0	1.0' ± 0.1'				
Entrance differential	0	1.0' - 2.0'	AVG	1.5		
<b>SOUTH FISHWAY</b>			3 AWS Turbines in regular service since 2/28/15			
Exit differential	0	≤ 0.5'				
Exit Control weirs	0	Mid Setting	Mid setting is normal for JDS high mode 10/18/15			
Count station differential	0	≤ 0.3'				
Weir crest depth (US gauge)	0	1.0' ± 0.1'				
South entrance differential	0	1.0' - 2.0'	AVG	1.5		
Entrance weir SE1	0	depth (≥ 8')	AVG	8.5		
Collection channel velocity	0	1.5 - 4 fps	AVG	3.04		
N. Entrance PH(Bay 19)differential	0	1.0' - 2.0'	AVG	1.3		
Entrance weir NE1	0	depth (≥ 8')	AVG	8.1		
Entrance weir NE2	0	depth (≥ 8')	AVG	8.2		
<b>JUVENILE PASSAGE</b>			2015 SMF sampling season ended 9/15; the facility continues in bypass through 11/24			
Forebay/bypass conduit differential	0	4.0' - 5.0'	AVG	4.6		
Submersible traveling screens	0	visual inspect	Camera inspection of all STSs: 3 bad screens were replaced with working spares			
Turbine trashrack drawdown	0	<1.5', wkly	MU trashracks' raking as necessary per the differentials			
Vert barrier screen drawdown	0	<1.5', wkly				
Spill volume	0	Bay2 & 1.6K	Spill season ended on 9/1. Bay 2 open at 1.6 K for JDN attraction, daylight hours only			
Spill pattern	0	per FPP				
Turbine Unit Priority	0	per FPP				
Turbine 1% Efficiency	0	per FPP				

## SMOLT MONITORING FACILITY

**Operation:**

Sampling season ended on 9/15; SMF will continue in bypass for the full flow PIT tags detections until 24 November.  
JD Fisheries crew works an abbreviated 18 hrs/7 swing shift schedule as required by FPP.

**Maintenance:**

Porosity Unit/Separator's painting completed on 10/15; the reinstallation of dewatering screens underway.

**Research:**

None

**Fallbacks:**            **AVG:**                            **MAX:**    0                            **MIN:**    0

## OTHER JOHN DAY ISSUES:

**Birds :**

see the Avian Numbers tab. We report all species and locations, but in reality only gulls in the tailrace BRZ are relevant at JD.  
Avian Lines 52 snapped on approx. 8/28/15. Avian line #45 broke on 8/2/15 Total snapped lines = 9 ---- 116 lines remain  
The following avian lines have snapped this season and are out of commission: 44, 45, 46, 52, 55, 56, and 60.  
Lines 25 and 26 have been missing since 2013; their re-install contract was awarded on 9/30/15 !

**Operations:**

JD North Fishway in regular service; 5 out of 6 AWS pumps are available. Repair work on pump 4 continues; pump 3 has vibration issues and should be the last last in service.

JD South Fishway in regular service with 3 AWS Turbines; it is meeting the optimal FPP criteria.

MU Gatewell Drawdowns: Differentials are checked Wednesdays and Sundays; all gatewells were in criteria.

**Maintenance:**

JD North AWS pumps: four out of total six are available. Repair of AWS pump # 4 by a contractor started on 1/26 & is ongoing.

Calibration: All gauges/ sensors are within the criteria of 0.3' .

**Research:**

2015 Adult Fish Counting by Normandeau Associates commenced on 1 April, 2015 and will continue daily through 1 November.

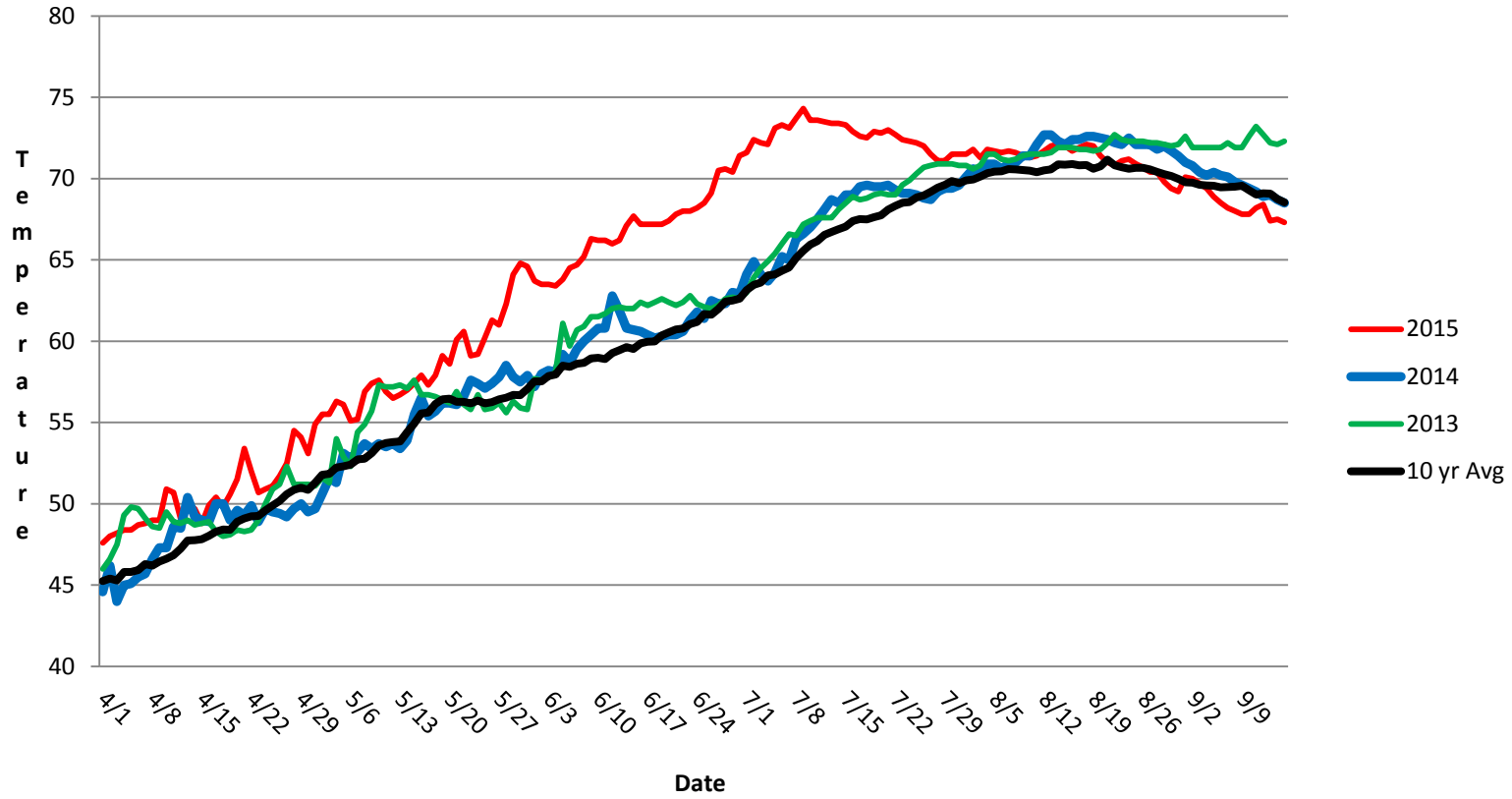
Proposal by PSMFC to install Adult PIT antennas at both JD Fishways is at the design/PDT level.

Kevin Moynahan  
OPM John Day/Willow Creek Project

**Date:**            October 24, 2015

E-Signed by MOYNAHAN, KEVIN, PATRICK, 1393959157  
VERIFY authenticity with Approval  
MOYNAHAN, KEVIN, PATRICK, 1393959157

### JDA SMF Water Temp



## JDA Collection Channel Velocity

Date 24-Oct-15

By: pete

Bay(s)	Time	Sec.	Velocity (f/s)
0-2	1:27	87	2.07
2 - 4	2:28	148	2.95
4 - 6	3:31	211	2.86
6 - 8	4:32	272	2.95
8 - 10	5:32	332	3.00
10 - 12	6:31	391	3.05
12 - 14	7:30	450	3.05
14 - 16	8:29	509	3.05
16 - 18	9:10	550	4.39
			<b>3.04</b>

**JDA Bird Counts: 10/4/15 to 10/10/15**

F(1): Forage AM survey F(2): Forage PM Survey NF(1): Non-Forage AM Survey NF(2): Non-Forage PM Survey

Date	Zone	Gulls				Cormorant				Caspian tern				White Pelican				Grebe				Total
		F(1)	F(2)	NF(1)	NF(2)	F(1)	F(2)	NF(1)	NF(2)	F(1)	F(2)	NF(1)	NF(2)	F(1)	F(2)	NF(1)	NF(2)	F(1)	F(2)	NF(1)	NF(2)	
11-Oct	PHFB	0	0	0	0	0	0	0	0	0	0	0	0	0	0	0	0	0	0	0	58	58
11-Oct	SWFB	0	0	198	217	0	0	0	0	0	0	0	0	0	0	0	0	53	0	5	0	473
11-Oct	PH1	4	4	0	0	4	0	0	0	0	0	0	0	0	0	0	0	0	0	0	0	12
11-Oct	PH2	0	0	0	0	2	0	0	0	0	0	0	0	0	0	0	0	0	0	0	0	2
11-Oct	PH3	0	0	0	0	0	0	0	0	0	0	0	0	0	0	0	0	0	0	0	0	0
11-Oct	SW1	0	0	0	0	0	0	0	0	0	0	0	0	0	0	0	0	0	0	0	0	0
11-Oct	SW2	0	0	0	0	0	0	0	0	0	0	0	0	0	0	0	0	0	0	0	0	0
11-Oct	SW3	0	0	0	0	1	0	0	0	0	0	0	0	0	0	0	0	0	0	0	0	1
Avg/Survey		4		208		4		0		0		0		0		0		27		32		546
12-Oct	PHFB	0	0	17	165	0	0	34	1	0	0	0	0	0	0	0	0	0	0	35	6	258
12-Oct	SWFB	0	0	25	125	0	0	0	0	0	0	0	0	0	0	0	0	0	0	0	0	150
12-Oct	PH1	0	0	2	0	0	0	1	0	0	0	0	0	0	0	0	0	0	0	0	0	3
12-Oct	PH2	0	0	0	0	0	0	0	0	0	0	0	0	0	0	0	0	0	0	0	0	0
12-Oct	PH3	0	0	0	0	0	0	23	0	0	0	0	0	0	0	0	0	0	0	0	0	23
12-Oct	SW1	0	0	0	0	0	0	0	0	0	0	0	0	0	0	0	0	0	0	0	0	0
12-Oct	SW2	0	0	0	0	0	0	0	0	0	0	0	0	0	0	0	0	0	0	0	0	0
12-Oct	SW3	0	0	7	0	0	0	0	0	0	0	0	0	0	0	0	0	0	0	0	0	7
Avg/Survey		0		171		0		30		0		0		0		0		0		21		441
13-Oct	PHFB	0	0	52	24	0	0	0	24	0	0	0	0	0	0	0	0	0	0	44	25	169
13-Oct	SWFB	0	0	0	45	0	0	0	0	0	0	0	0	0	0	0	0	0	0	0	0	45
13-Oct	PH1	8	0	0	1	2	1	0	1	0	0	0	0	0	0	0	0	0	0	0	0	13
13-Oct	PH2	0	0	0	0	0	0	0	0	0	0	0	0	0	0	0	0	0	0	0	0	0
13-Oct	PH3	0	0	0	0	0	0	0	15	0	0	0	0	0	0	0	0	0	0	0	0	15
13-Oct	SW1	0	0	0	0	0	0	0	0	0	0	0	0	0	0	0	0	0	0	0	0	0
13-Oct	SW2	0	0	0	0	0	0	0	1	0	0	0	0	0	0	0	0	0	0	0	0	1
13-Oct	SW3	0	0	0	0	0	0	0	2	0	0	0	0	0	0	0	0	0	0	0	0	2
Avg/Survey		4		61		2		22		0		0		0		0		0		35		245
14-Oct	PHFB	0	0	0	0	0	0	14	17	0	0	0	0	0	0	0	0	12	0	0	0	43
14-Oct	SWFB	147	0	0	55	0	0	0	0	0	0	0	0	0	0	0	0	0	0	0	0	202
14-Oct	PH1	12	4	0	0	7	22	0	0	0	0	0	0	0	0	0	0	0	0	0	0	45
14-Oct	PH2	3	2	0	0	0	0	0	0	0	0	0	0	0	0	0	0	0	0	0	0	5
14-Oct	PH3	0	0	0	0	0	0	0	0	0	0	0	0	0	0	0	0	0	0	0	0	0
14-Oct	SW1	0	0	0	0	0	0	0	0	0	0	0	0	0	0	0	0	0	0	0	0	0
14-Oct	SW2	0	0	0	0	0	0	2	0	0	0	0	0	0	0	0	0	0	0	0	0	2
14-Oct	SW3	0	0	0	0	0	0	0	28	0	0	0	0	0	0	0	0	0	0	0	0	28
Avg/Survey		84		28		15		31		0		0		0		0		6		0		325

**JDA Bird Counts: 10/11/15 to 10/17/15**

F(1): Forage AM survey F(2): Forage PM Survey NF(1): Non-Forage AM Survey NF(2): Non-Forage PM Survey

Date	Zone	Gulls				Cormorant				Caspian tern				White Pelican				Grebe				Total
		F(1)	F(2)	NF(1)	NF(2)	F(1)	F(2)	NF(1)	NF(2)	F(1)	F(2)	NF(1)	NF(2)	F(1)	F(2)	NF(1)	NF(2)	F(1)	F(2)	NF(1)	NF(2)	
15-Oct	PHFB	0	0	0	0	0	0	18	5	0	0	0	0	0	0	0	0	0	0	26	0	49
15-Oct	SWFB	0	0	111	49	0	0	0	0	0	0	0	0	0	0	0	0	0	0	0	0	160
15-Oct	PH1	0	5	0	0	0	4	0	0	0	0	0	0	0	0	0	0	0	0	0	0	9
15-Oct	PH2	0	0	0	0	0	0	1	0	0	0	0	0	0	0	0	0	0	0	0	0	1
15-Oct	PH3	0	0	0	0	0	0	1	0	0	0	0	0	0	0	0	0	0	0	0	0	1
15-Oct	SW1	0	0	0	0	0	0	0	0	0	0	0	0	0	0	0	0	0	0	0	0	0
15-Oct	SW2	0	0	0	0	0	0	0	0	0	0	0	0	0	0	0	0	0	0	0	0	0
15-Oct	SW3	0	0	0	0	0	0	0	36	0	0	0	0	0	0	0	0	0	0	0	0	36
Avg/Survey		3		80		2		31		0		0		0		0		0		13		256
16-Oct	PHFB	0	0	0	0	0	0	34	0	0	0	0	0	0	0	0	0	0	0	20	20	74
16-Oct	SWFB	0	0	0	13	0	0	0	0	0	0	0	0	0	0	0	0	0	0	0	0	13
16-Oct	PH1	2	3	0	0	11	10	0	0	0	0	0	0	0	0	0	0	0	0	0	0	26
16-Oct	PH2	0	6	0	0	2	0	0	0	0	0	0	0	0	0	0	0	0	0	0	0	8
16-Oct	PH3	3	0	0	0	0	0	0	0	0	0	0	0	0	0	0	0	0	0	0	0	3
16-Oct	SW1	0	0	0	0	0	0	0	0	0	0	0	0	0	0	0	0	0	0	0	0	0
16-Oct	SW2	0	0	0	0	0	0	0	22	0	0	0	0	0	0	0	0	0	0	0	0	22
16-Oct	SW3	0	0	0	0	0	0	20	53	0	0	0	0	0	0	0	0	0	0	0	0	73
Avg/Survey		7		7		12		65		0		0		0		0		0		20		219
17-Oct	PHFB	0	0	0	0	0	0	30	6	0	0	0	0	0	0	0	0	0	0	27	18	81
17-Oct	SWFB	0	0	98	25	0	0	0	0	0	0	0	0	0	0	0	0	0	0	0	0	123
17-Oct	PH1	0	0	0	0	14	12	0	0	0	0	0	0	0	0	0	0	0	0	0	0	26
17-Oct	PH2	0	0	0	0	0	0	0	0	0	0	0	0	0	0	0	0	0	0	0	0	0
17-Oct	PH3	0	0	0	0	0	0	0	0	0	0	0	0	0	0	0	0	0	0	0	0	0
17-Oct	SW1	0	0	0	0	0	0	0	0	0	0	0	0	0	0	0	0	0	0	0	0	0
17-Oct	SW2	0	0	0	0	0	0	0	6	0	0	0	0	0	0	0	0	0	0	0	0	6
17-Oct	SW3	0	0	0	0	0	0	0	56	0	0	0	0	0	0	0	0	0	0	0	0	56
Avg/Survey		0		62		13		49		0		0		0		0		0		23		292
<b>Totals</b>		<b>Gulls</b>				<b>Cormorant</b>				<b>Caspian tern</b>				<b>White Pelican</b>				<b>Grebe</b>				<b>Total</b>
		F		NF		F		NF		F		NF		F		NF		F		NF		
<b>Weekly Total</b>		203		1229		92		451		0		0		0		0		65		284		2324
<b>Avg/Survey</b>		15		88		7		32		0		0		0		0		5		20		166

John Day Dam  
Avian Zones



## John Day Weekly Averages

	Temp:	Secchi:	Fallbacks
Sun	63	6.0	
Mon	63	6.0	
March 3, 1900	63	6.0	
Wed	63	6.0	
Thur	63	6.0	
Fri	63	6.0	
Sat	63	6.0	
<b>AVG:</b>	<b>63</b>	<b>AVG:</b> <span style="border: 1px solid black; padding: 2px;">6.0</span>	<b>AVG</b> <span style="border: 1px solid black; padding: 2px;"></span>
			<b>MAX</b> <span style="border: 1px solid black; padding: 2px;">0</span>
			<b>MIN</b> <span style="border: 1px solid black; padding: 2px;">0</span>

	NE1	NE2	S.Ent	SE1	N.Ent	JBS Diff	Bay19
Sun	8.0	8.0	1.6	8.6	1.5	4.6	1.7
Sun	8.1	8.1	1.6	8.6	1.6	4.5	1.4
Mon	8.3	8.2	1.7	8.6	1.5	4.6	1.8
Mon	8.1	8.1	1.4	8.3	1.5	4.6	1.3
Tues	8.1	8.1	1.5	8.6	1.5	4.5	1.5
Tues	8.1	8.1	1.4	8.3	1.6	4.5	1.3
Wed	8.2	8.4	1.5	8.5	1.5	4.6	1.1
Wed	8.1	8.1	1.5	8.4	1.7	4.7	1.1
Thur	8.1	8.2	1.5	8.5	1.5	4.5	1.2
Thur	8.2	8.0	1.4	8.4	1.7	4.5	1.2
Fri	8.1	8.3	1.5	8.6	1.4	4.6	1.2
Fri	8.2	8.1	1.5	8.5	1.5	4.6	1.2
Sat	8.2	8.2	1.6	8.5	1.5	4.6	1.2
Sat	8.1	8.2	1.4	8.4	1.6	4.6	1.2
<b>AVG:</b>	<b>8.1</b>	<b>8.2</b>	<b>1.5</b>	<b>8.5</b>	<b>1.5</b>	<b>4.6</b>	<b>1.3</b>